

MARTIN™ MC 78 and MC 89

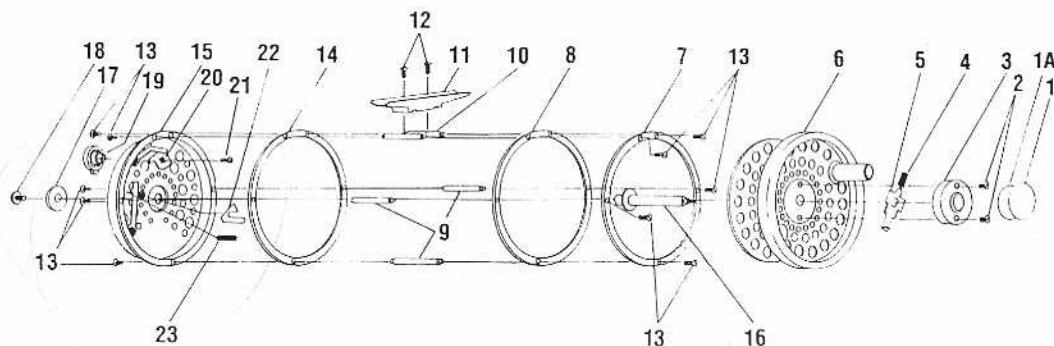
SPECIFICATIONS:

MC 78

30 yds. WF8F plus 100
yds. of 20# backing
capacity
5.0 oz. Weight
3 1/2" Diameter
1 3/16" Spool Depth

MC 89

30 yds. WF9F plus 100
yds. of 20# backing
capacity
5.25 oz. Weight
3 1/2" Diameter
1 5/16" Spool Depth



FEATURES:

- Lightweight, perforated aluminum alloy spool
- Aluminum alloy rim control, counterbalanced spool
- Stainless-steel line guides need no adjustment for right/left hand retrieve
- Cammed, all-metal single pawl drag is coil-spring powered
- Five-year limited warranty

ReelSchematic

Key No.	MC 78 Part No.	MC 89 Part No.	Description	Price
1	727G	N/A	Medallion	1.40
1A	9501	N/A	Medallion Glue Circle	.93
2	RR130-10A	RR130-10A	Spool Lock Cap Screw	.20
3	251X-MP	251X-MP	Spool Lock Cap	1.20
4	253S	253S	Spool Lock Spring	.32
5	XM050-01A	XM050-01A	Spool Lock	.80
6	F48	F49	Spool Assembly	10.10
7	WC193-03ACP	WC193-05APA	Rim (Spool Side - Black)	2.72
8	WC193-09ACP	WC193-09ACP	Line Guide (Spool Side)	2.38
9	783-01B	894-01A	Line Guide Post	1.94
10	783-01BSAW	894-01ASAW	Reel Foot Post	2.05
11	809-01A	809-02A	Reel Foot	5.57
12	RR130-10A	RR130-10A	Reel Foot Screw	.20
13	234	234	Post Screw	.32
14	M-781-01BCP	M-781-01BCP	Line Guide (Pawl Side - Nickle)	2.51
15	XM023-02A	S-1-MC89-01ACP	Back Cover Assembly	.80
16	780-01B	901-01A	Spindle	2.80
17	774-01A	774-01A	Spindle Cap	.84
18	RR130-07A	RR130-07A	Spindle Screw	1.00
19	LC032-01A	LC032-01A	Drag Knob	.89
20	150-01ATP	952-01A	Drag Cam	1.00
21	RR130-06A	RR130-06A	Drag Cam Screw	.73
22	756-CP	756-CP	Pawl	.54
23	510S	510S	Pawl Spring	.32

MODEL INTRODUCED	EFFECTIVE DATE OF PARTS LIST/DIAGRAM	Oct. 1996	DISCONTINUED	N/A
------------------	--------------------------------------	-----------	--------------	-----

Prices subject to change without notice. Prices do not include postage and handling.

PLEASE ORDER BY PART NUMBER Zebco Division Brunswick Corporation, Box 270, Tulsa, OK 74101 USA 918-831-6965

